

Rosehaven Mission Statement

Provide the Mansfield community with a welcoming supportive home-like environment, that embraces respect and compassion, providing a place of respite and support in end of life care.

Our Vision

To support people with a life limiting illness in a home like environment by providing:

- Day / Short Stay Respite.
- Palliative and End of Life Care.
- Short Term / Transitional Care.

Our Values

- Community involvement
- Community participation
- Respect
- Dignity
- Trust
- Compassion



Letter from the manager:

Welcome to Rosehaven's first newsletter, the board, and management would like to welcome you. This newsletter has been established to keep everyone informed all things Rosehaven.

Well, what a year we had last year. With a pandemic occurring, this gave us an opportunity to go underground and move ahead building and providing a state of the art Hospice. We are now ready to welcome you all, and are getting ready to welcome our first lot of guests.

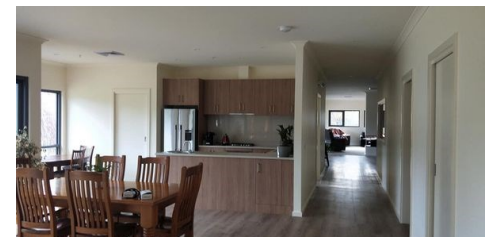


I am very excited to be back on board, the universe has aligned, and I hope to see our first lot of guests in very soon.

Toni and I, look forward to starting a regular welcoming morning, for our volunteers to come together joining us for a cuppa, meander in the garden, lend a hand with tasks, read the paper, share stories, do some craft, this is a morning designed for you.

We are hoping that you will have some suggestions for education that we can provide in the future, please feel free to make some suggestions, some ideas already are: palliative care modules, advanced care planning, My Aged Care Training.

The first Wednesday "Friends of Rosehaven Weekly Welcoming Wednesdays" **was to be** 17th February, **this has been rescheduled to Wednesday 24th February 10 - 12pm**



I am nervous, happy and extremely excited to see Rosehaven open and being operational, welcoming guests in early 2021 and for us being a place of community.

I look forward to meeting with you, hearing your ideas and working with you all in 2021

Kind regards

Bianca Hurst.

Manager Rosehaven Hospice.

Our Facility aims to compliment the palliative care provided by our local area health services and community health teams.

Prospective guests are assessed to ensure the service is suited to their needs.

Guests and their families, will be supported by our passionate and caring nurses, carers and trained volunteers.

End of life care will be given to our guests and their families free of charge, with those that can afford to donate funds to assist with ongoing operational costs being appreciated.

Rosehaven is a tranquil non-clinical, supportive environment, offering an alternative to a busy hospital or nursing home for respite and end of life care.

Wilson's Training Facility -

With us not being able to hold our furniture sales and us having such a large space that was unable to be used, the board of management was approached to see whether, Rosehaven could provide a space for a young, local, skateboarding, up and coming Olympian, to train in an all weather venue.

This was an opportunity for Rosehaven to support a young community member to follow her dreams.

Hayley Wilson and her team are extremely appreciative of the opportunity. If you see Hayley around Rosehaven, please feel free to have a chat or watch her train.

Hayley will be providing opportunities for the friends of Rosehaven to ask questions and will be a guest speaker at one of our information sessions.



Thank you to all of our volunteers that have kept the shop running and the grounds maintained, over what has been a very interesting environment to be living in. Great work team we appreciate your support.

We are looking for people that would like to provide social connection, meaningful activities and / or providing meals and snacks at different times whilst our guests are visiting.

Would you like to be a part of the respite and end of life care team?

There will be upcoming training opportunities.

If you are interested please register your interest with me.



**On behalf of the Rosehaven team,
we hope to see you all soon,
and we thank you for your ongoing
support.**

Rosehaven shop is open:

Monday—Friday

10—4pm

Sat / Sun

10—2pm

Please only drop off goods during shop hours.

Shop manager

Cathie Smith

0409787481

jvandcsmith@gmail.com